

INSTALLATION OF REDIPAVE REFUGE ISLAND



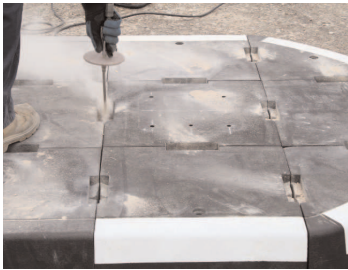
1. Put out warning signs and sufficient traffic management measures to ensure the safety of operatives, road users and pedestrians as per Chapter 8.



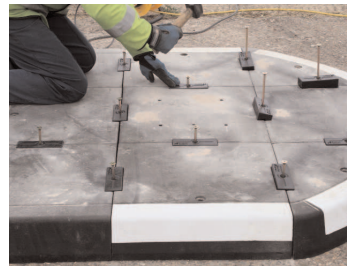
2. Mark position on road for location of Islands and assemble the RediPave modules accordingly.



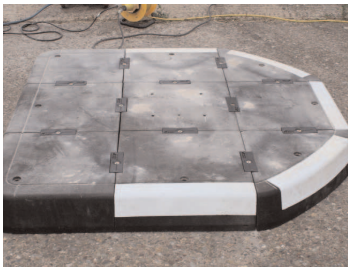
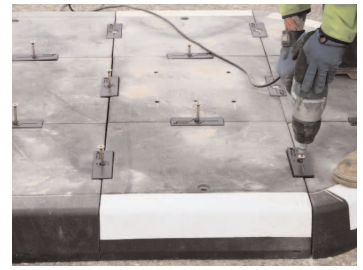
3. Ensure all module butt joints are tightly together and start from the middle sections of the RediPave. With a 14mm drill bit, drill through the holes to a depth of 270mm from module surface into the road. The drill used will be a Hilti T15 or T21 hammer drill (or similar) attached to a 3 kva generator via a 25 m. 110 v extension lead.



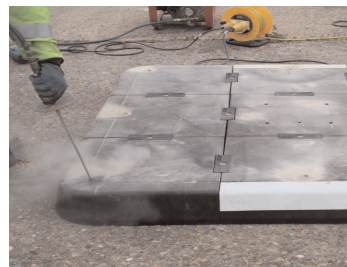
4. Blow out fixing holes using a long nosed air gun, powered by a 120psi portable compressor, insert resin commencing at base of hole, 2 to 3 pumps required using a resin gun supplied by Rediweld.



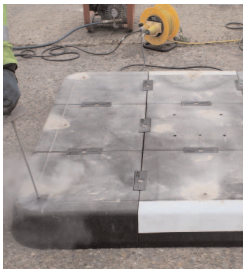
5. Insert coach screw through black plastic anchor block and attach Rediplug and tap down to surface level. Tighten with impact wrench; ensuring coach screw is firmly seated.



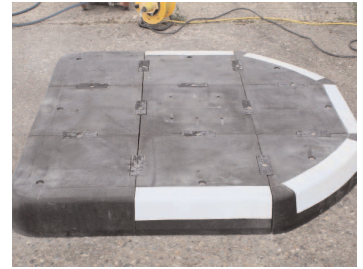
6. Repeat drilling, blowing, resin for remaining middle holes and use the black plastic anchor fixings to secure island. Once middle sections have been completed, drill remaining outside holes and blow out fixings holes using the long nosed air gun. Thoroughly blow out holes and insert resin commencing at base of hole, 2 to 3 pumps required.



Warning – resin will harden in within 25 minutes.



7. Insert coach screw and plastic washer into Rediplug. Tap assembly down to 70mm above module surface and tighten with impact wrench, ensuring washer is firmly seated.



8. Remove all work debris & personal rubbish from site.

Do not over-tighten.

9. Remove traffic management signs and barriers..